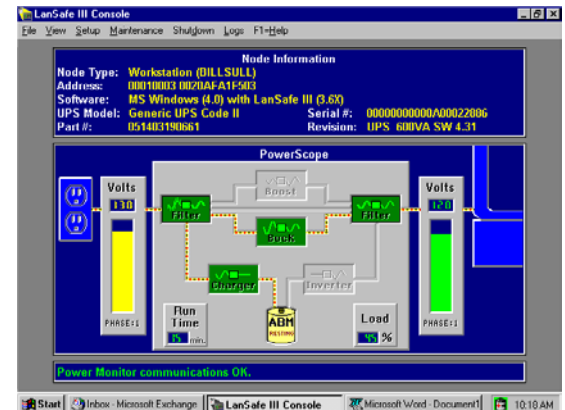


POWERWARE®

UNINTERRUPTIBLE POWER SYSTEMS

LanSafe – UPS Power Management Solution

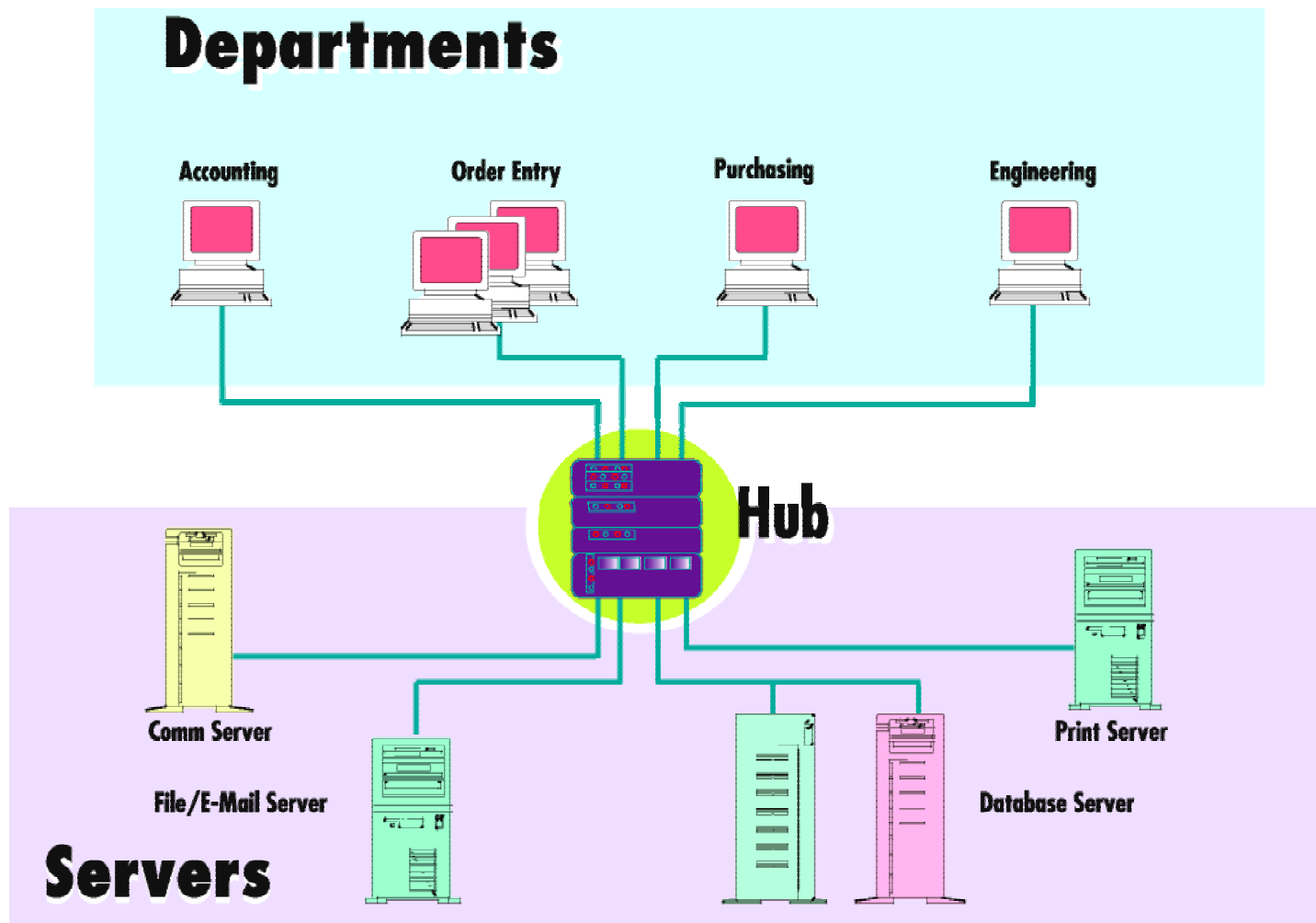
“Network Shutdown”



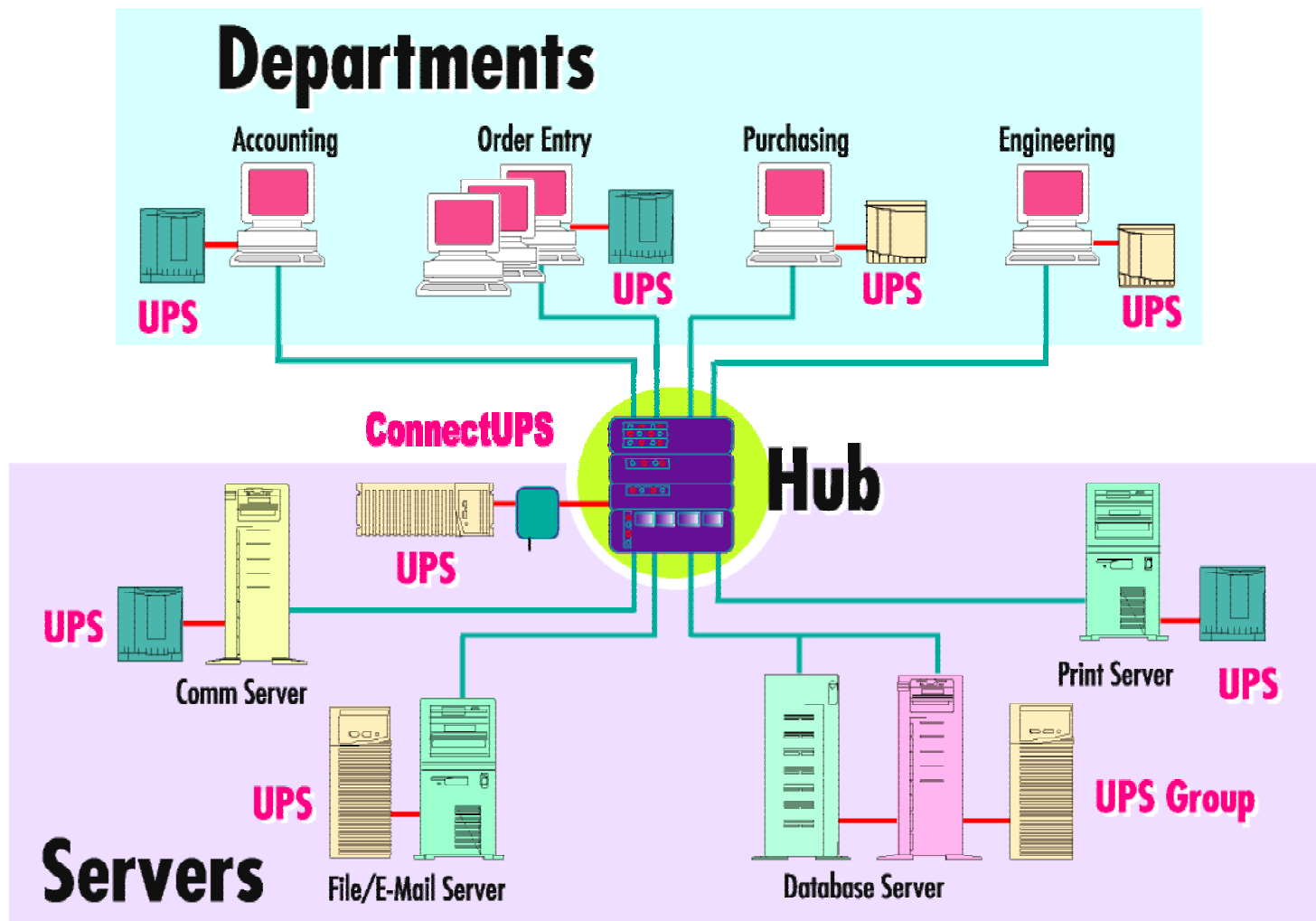
Why is UPS Software a MUST?

- **FOR Automatic System Shutdown Avoid**
 - Operating System and Network crashes
 - Data loss
 - Corrupted data and applications
- **FOR informing users on UPS status changes**
- **FOR UPS management**

The Unprotected Network



The Protected Network



Network Shutdown Benefits

Feature	Benefit
◆ Patented Exclusive SafetyNet™ prioritized sequential shutdown of all network devices	<ul style="list-style-type: none">➤ Assures that all network transactions are completed prior to shutdown➤ Servers shut down last, after other devices have saved files
◆ Saves work in progress during shutdown	<ul style="list-style-type: none">➤ Preserves data integrity throughout the network➤ Essential for multi-tasking environments and critical documents
◆ Multiple workstations, servers and bridges are fully supported (with sequencing of shutdown) by a single UPS	<ul style="list-style-type: none">➤ Dramatically reduces cost per device for power protection➤ Allows sequencing of shutdown

Network Monitoring Benefits

Feature	Benefit
◆ Provides remote monitoring and control of ALL UPSs on the network	→ View real-time power conditions throughout the network → Remote reboot and shutdown → Change operating parameters
◆ Ability to change configuration without rebooting	→ Easy network expansion; no need to down server
◆ Simultaneous network-wide testing	→ Complete network power diagnostics at once; no need to check each device separately
◆ Network silent feature	→ Eliminates unnecessary network traffic
◆ Compatible with other Manufacturers' UPSs	→ System-wide support on the dry-contact function level

Money Saving Benefits

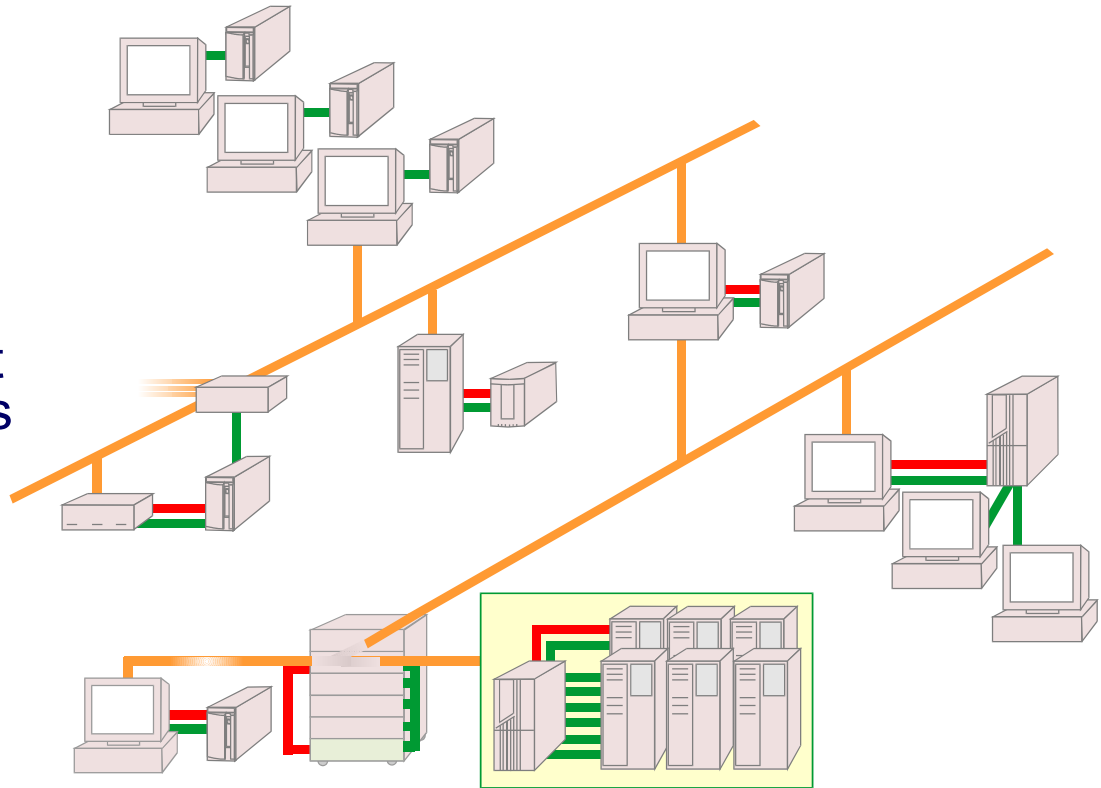
Feature	Benefit
◆ Monitor and shutdown other manufacturer's UPSs	<ul style="list-style-type: none">↳ Leverages current investment in power protection hardware↳ Increases flexibility
◆ UPS Groups - Support for multiple computers on a single UPS	<ul style="list-style-type: none">↳ Lowers price per VA↳ Increases flexibility
◆ Complete ownership of all Powerware software technology	<ul style="list-style-type: none">↳ Site licensing options↳ Bundled solutions↳ Right to copy licenses for OEMs and distributors

True Orderly Shutdown

1. All unsaved data is saved on the hard disk
2. All applications are closed
3. All files are closed
4. The CACHE memory is flushed on the hard disk
5. The UPS is switched off

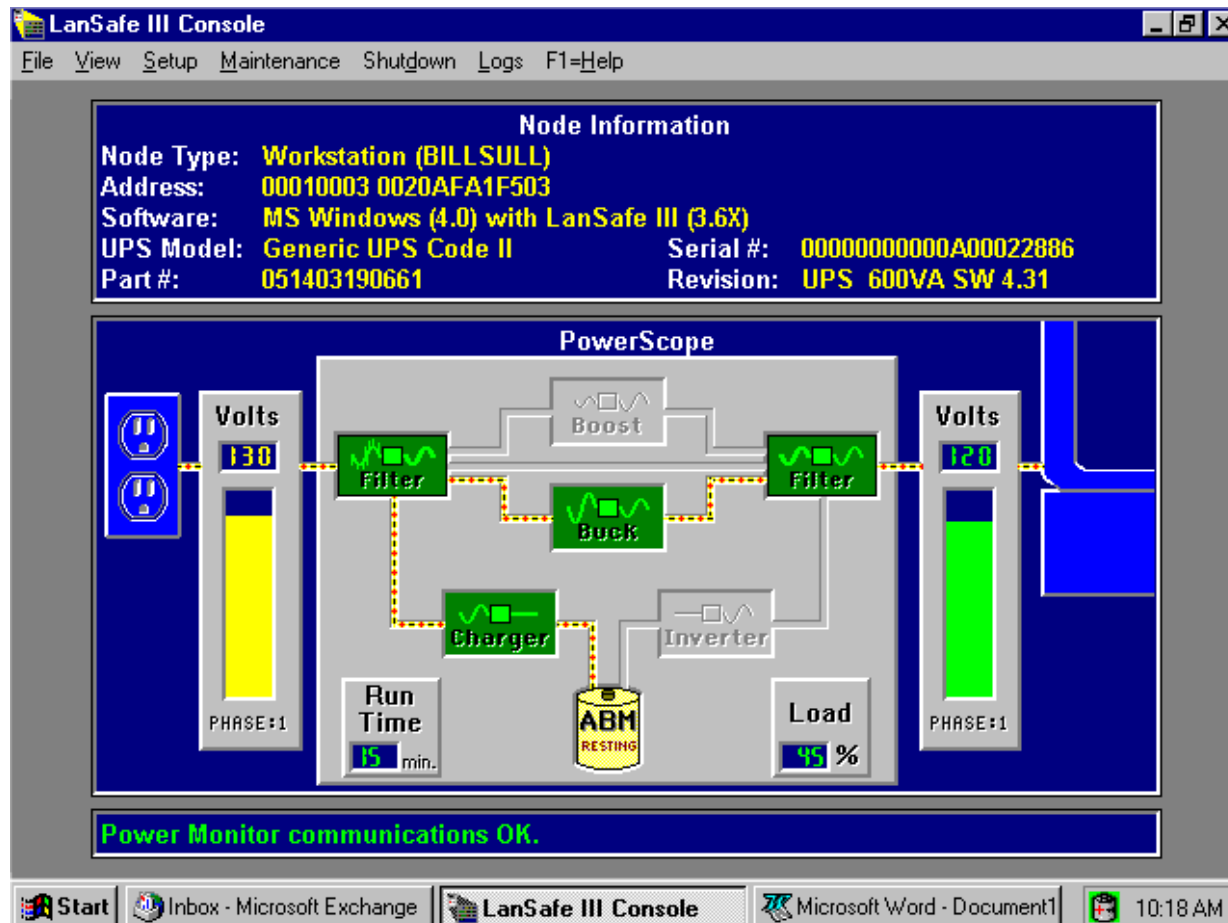
LanSafe - The Complete Network Shutdown Solution

- SW protection for:
 - Servers
 - Workstations
 - Bridges
 - Gateways
 - Other intelligent network devices



PowerScope

LanSafe's PowerScope displays pertinent power and UPS related information; interface is uniform across all supported operating systems

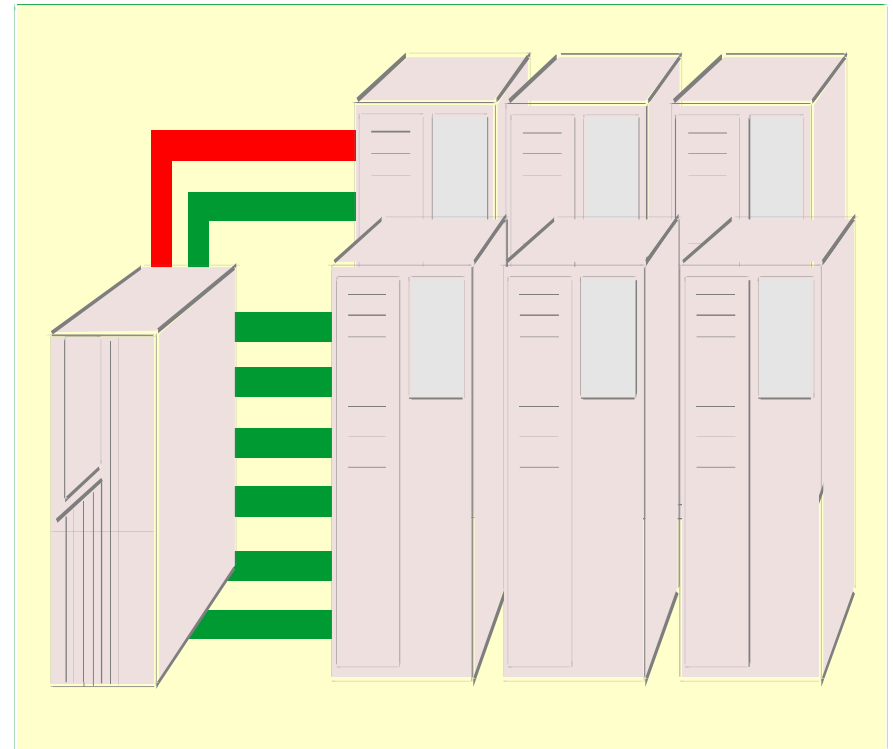


Group Control

Group Controller / Member definitions

- Provide shutdown for up to 64 computers w/ a single UPS Serial port
- Reduces cost of power protection

Server farm



	= Communications
	= Power

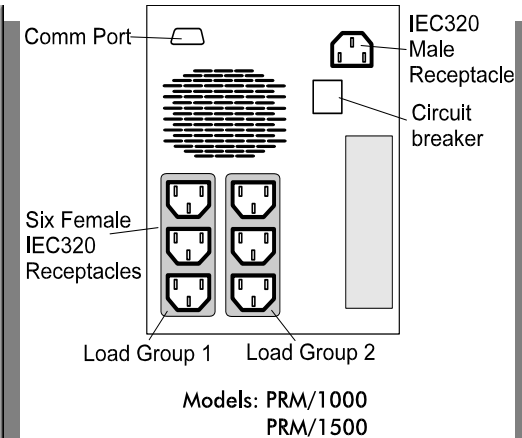
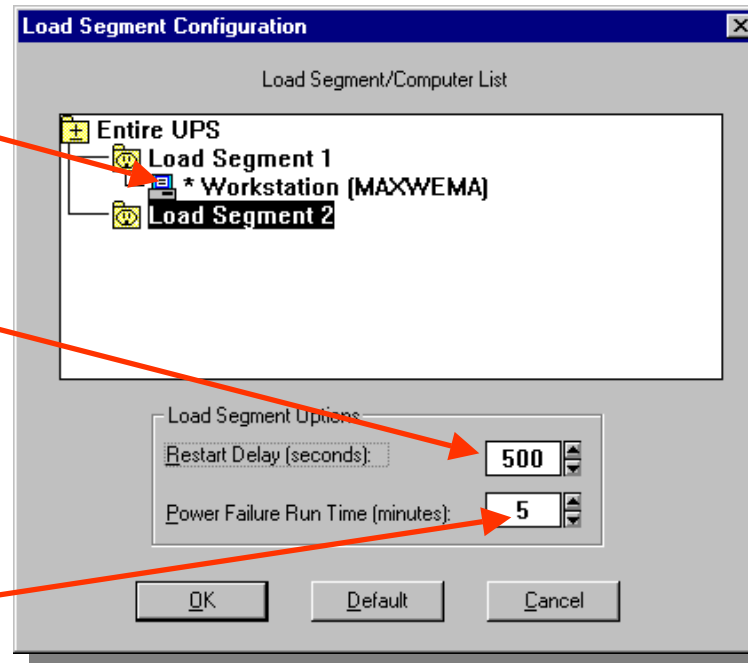
Individual Load Segment Shutdown/Restart

**Drag & drop loads
onto connected
segments**

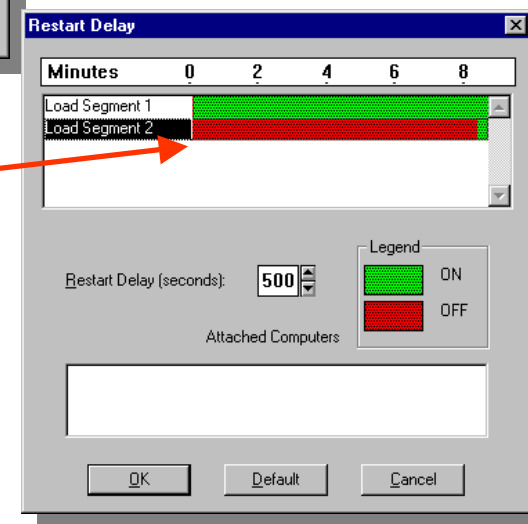
**Individual segment
restart delays after
power comes back**

**Individual segment
run times during a
power failure**

**2 segment load
shedding example**



**NetUPS 1000VA & 1500VA rear
panel w/ two load segments**

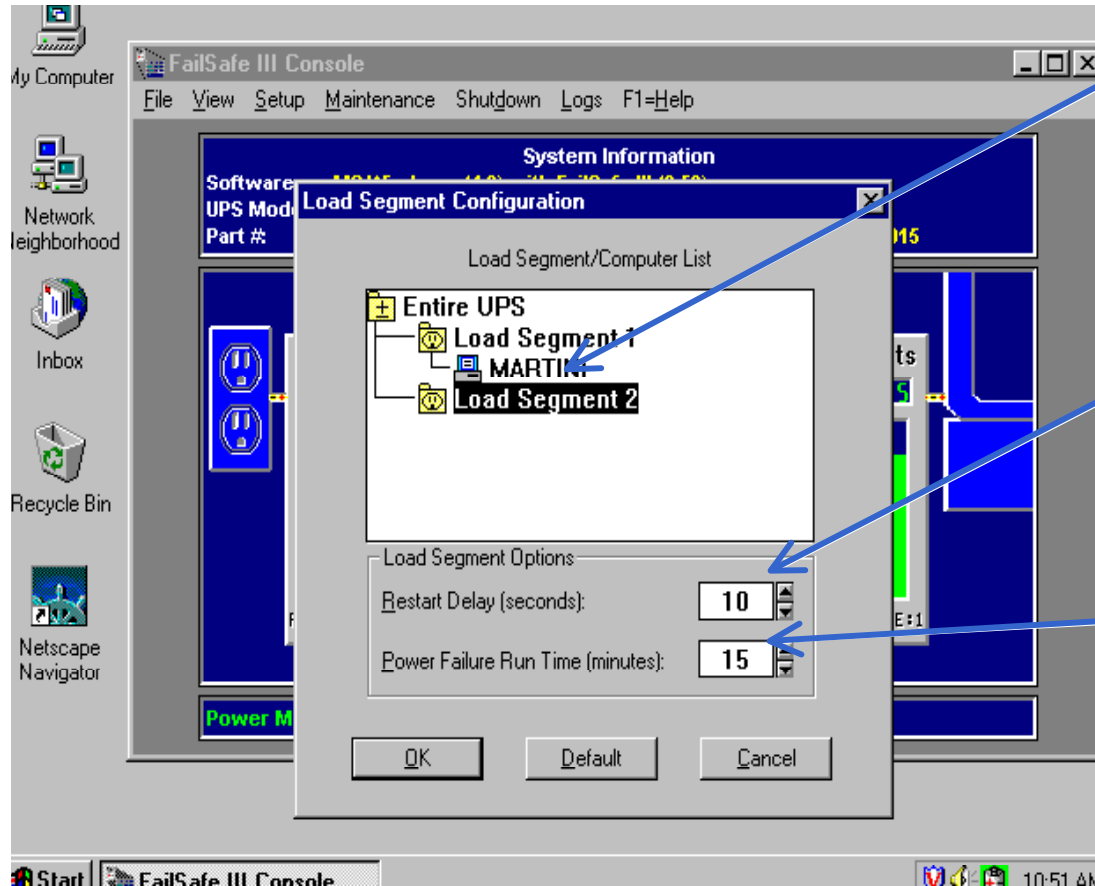


“Doubles the run time for your critical loads”

Power Extend Technology™

PET™ and SafeBoot™

POWERWARE®
UNINTERRUPTIBLE POWER SYSTEMS



Attach computer that controls UPS to the correct load segment

Configure power-up sequencing (SafeBoot™)

Set power-down sequence in the event of a power failure (PET™)

Customizable Alerts

Initiate a batch
to be run

Customize message text
—great for other languages

The screenshot shows the 'Customize Alerts' dialog box. On the left, a list of alert messages is shown, with '0 - \$MACHINE is on battery ... shutdown' selected. Below this list is a 'Substitution Variables' section. On the right, the 'Alert Properties' section is visible, including a 'Message Text' field, checkboxes for 'Execute Command', 'E-Mail Addresses', 'Send String to Modem', and 'Broadcast Message to Users', and a 'Delay Time (seconds)' field. Callout arrows point from the text boxes to specific elements in the dialog.

Copy From ... **Select All**

0 - \$MACHINE is on battery ... shutdown
1 - \$MACHINE will shut down in 1 min
2 - \$MACHINE shutdown has been cancelled
3 - \$MACHINE is now shutting down
4 - Unable to contact UPS group controller
5 - Contact with UPS group controller established
6 - FailSafe III Power Monitor loaded
7 - FailSafe III Power Monitor unloaded
8 - Time to run preventive maintenance
9 - Communications port is unavailable
10 - Communications failure with UPS
11 - Communications established with UPS
12 - Abnormal operation
13 - Abnormal operation resolved
14 - Utility power failure
15 - Utility power failure resolved
16 - Low battery

Substitution Variables

\$MACHINE = Name of the Machine
\$MESSAGE = Message Text
\$MINUTES = Minutes Until Shutdown
\$MSGNUM = Number of the Message
\$RET = Enter a Carriage Return
\$WAIT = Wait for response from modem

Alert Properties

Message Text: \$MACHINE is on battery ... shutdown in \$MIN

☐ Execute Command **Test Command**

☐ E-Mail Addresses **Test E-Mail**

☒ Send String to Modem **Test Modem**

Comm Port

☐ Broadcast Message to Users **Test Broadcast**

☐ All ☐ Some

Delay Time (seconds)

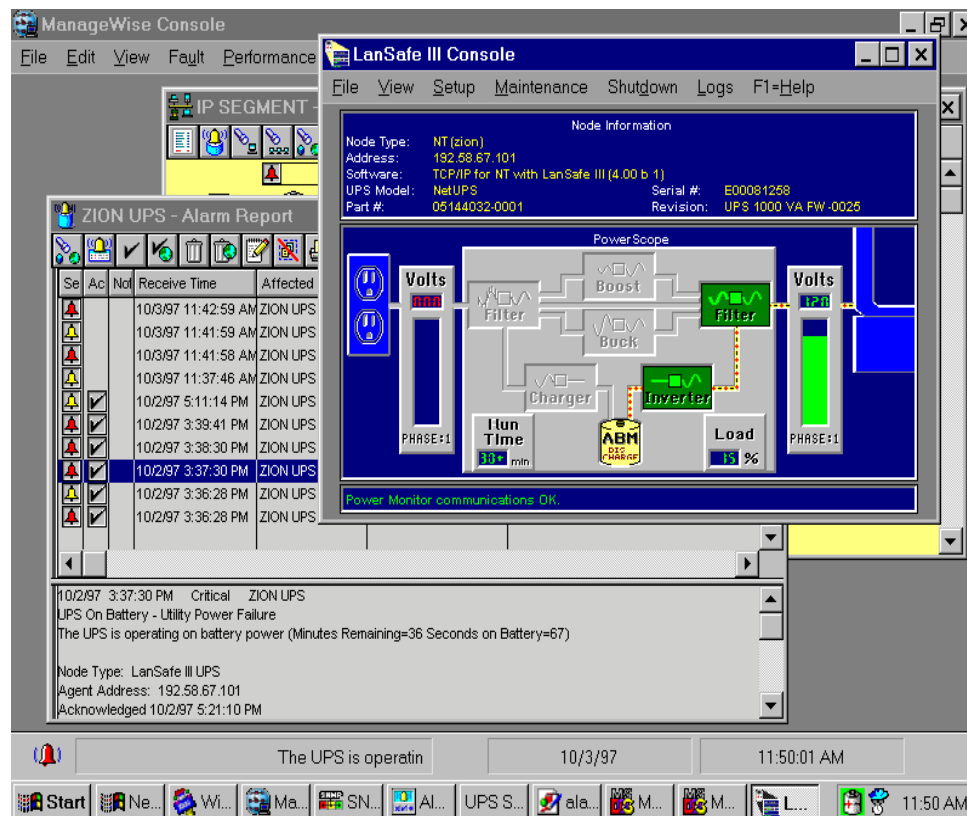
OK **Defaults** **Cancel**

Send e-mail or
pager messages

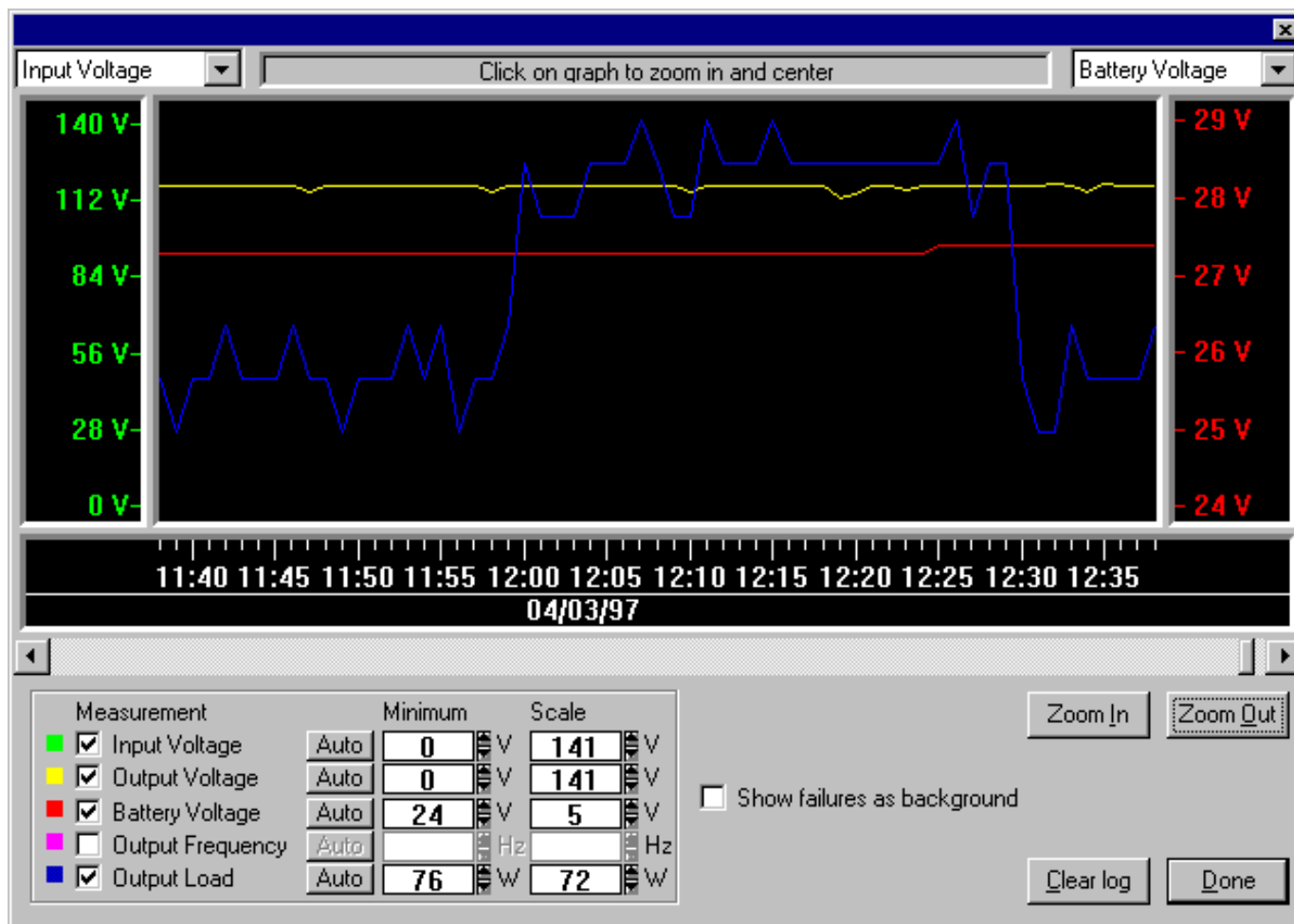
Select users to
receive alerts

SNMP Proxy Agent Support

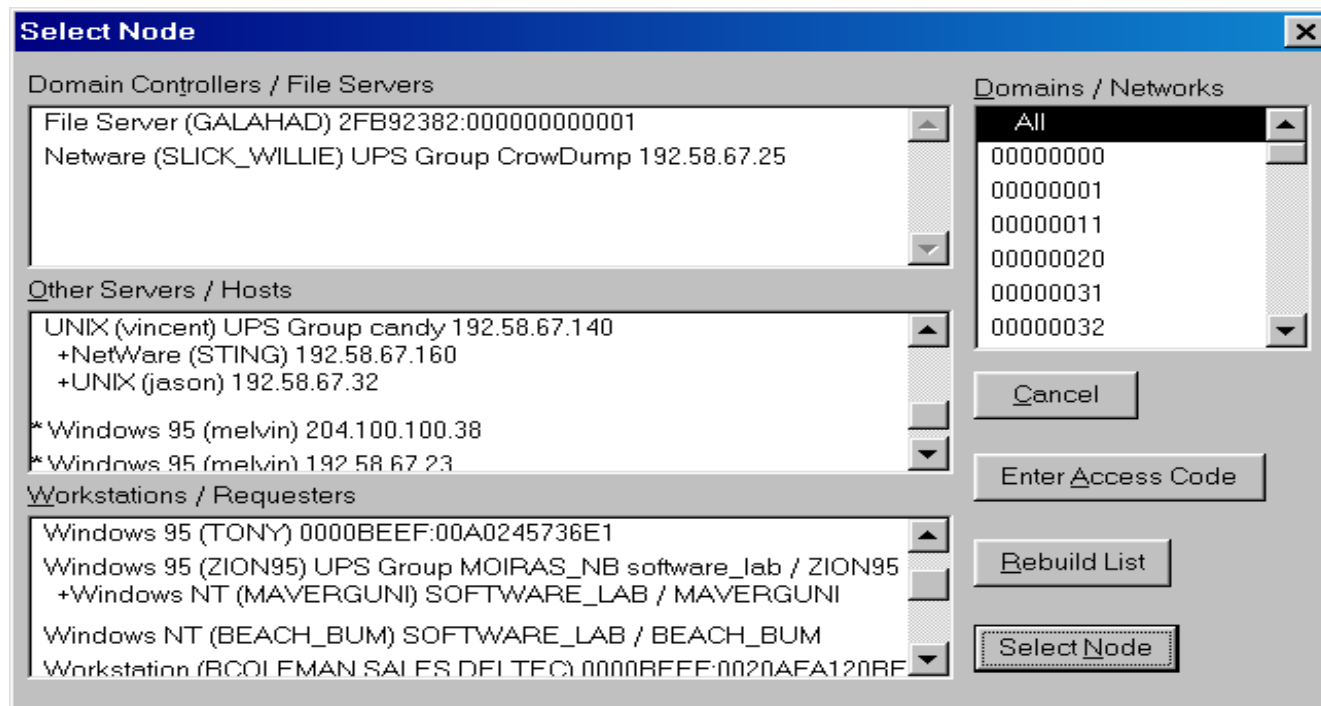
- **Send Alarm Traps to any SNMP Network Management System:**
 - HP OpenView
 - IBM NetView
 - Tivoli
 - CiscoWorks
 - Sun NetManager
 - TNG Unicenter
 - Etc.
- **Ability to do “GETs” and “SETs” supported**



Periodic Log Display



Cross-Platform Functionality

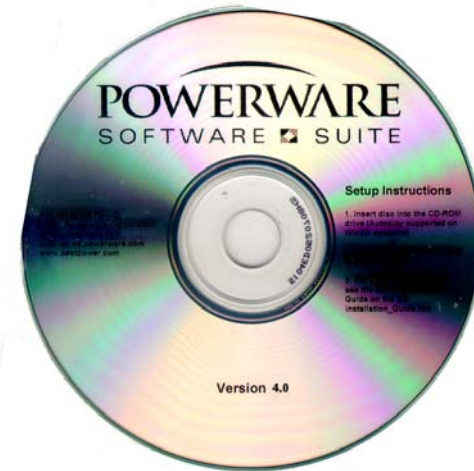


- Enables UPS management throughout complex multiplatform Operating System configurations running on TCP/IP
- More cost effective & easy customer solutions
- The perfect solution for a centralized UPS configuration

Software Bundled with all UPSs **POWERWARE** UNINTERRUPTIBLE POWER SYSTEMS

CD-ROM Contents:

- **Software Products**
 - LanSafe
 - OnliNet Vista / Centro
 - CheckUPS Basic, Advanced
 - Netwatch
 - PowerVision (30-day trial version)
- **Software Installation Wizard**
- **General Software Product Information**
 - Documentation (guides, manuals, release notes, readme files, etc.)
 - Data Sheet PDFs (UPSs, Surge protection, Connectivity options, Software)
 - Supported operating system charts
- **Multimedia Demos**
 - LanSafe III, OnliNet, PowerVision and Foreseer



LanSafe III Platforms

- **Novell NetWare**
 - **MS-Windows**
 - Windows 9x
 - Windows NT (Intel, Dec Alpha & Motorola PowerPC)
 - Windows 2000
 - Windows Me
 - Windows XP
 - **Other**
- **UNIX**
 - SCO
 - Sun OS
 - Solaris
 - HP-UX
 - DG-UX
 - Interactive
 - UnixWare
 - IBM AIX
 - Tru64
 - Digital UNIX
 - AT&T (NCR) UNIX
 - Unisys UNIX
 - Linux
 - SGI IRIX
 - Other

